

22 Series

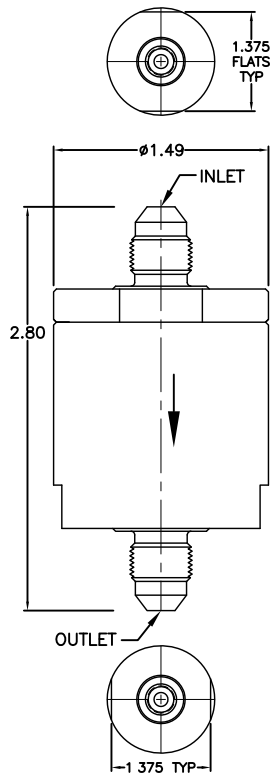
In-Line Filters



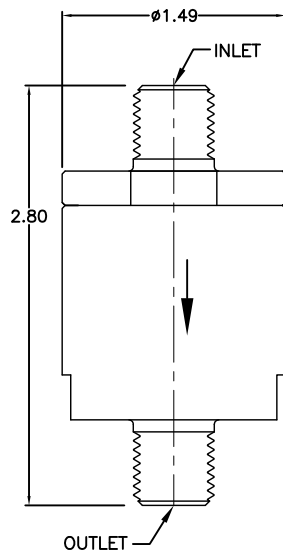
- ▶ Available in Aluminum (5K), 304 Stainless (6K) and 316 Stainless (6K)
- ▶ Flows up to 2.5 GPM or 60 SCFM
- ▶ Port Sizes Available in 1/8", 1/4" and 3/8"
- ▶ 304 Stainless Steel Pleated Disc
- ▶ Various Micron Ratings Available from 2 to 300 Micron
- ▶ Ideal for Applications with Limited Space
- ▶ Economical Filters for Test Stands, Meters, Gauges, Relief Valves and Both Hydraulic and Pneumatic Systems

MINI IN-LINE FILTERS

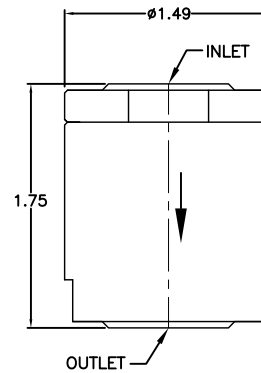
1/8, 1/4, & 3/8
MALE MS3656



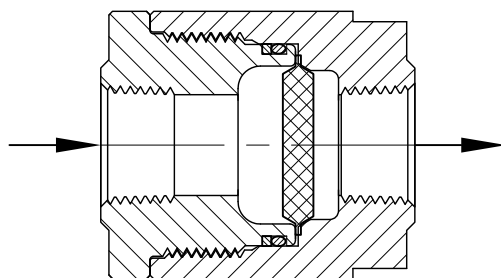
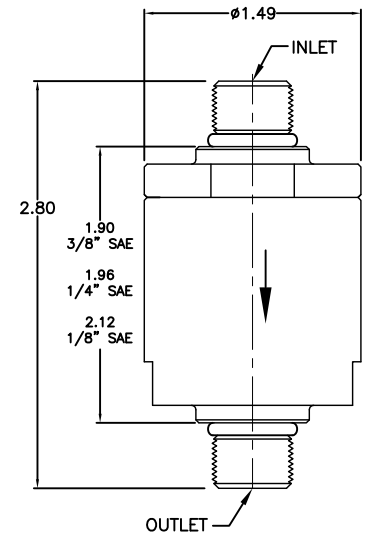
1/8, 1/4, 3/8
MALE NPT



1/8, 1/4, & 3/8
FEMALE NPT, SAE, AS5202



1/8, 1/4, & 3/8
MALE SAE



Pressure Ratings

Aluminum (5K)

Operating: 5,000 PSI
Proof: 7,500 PSI
Burst: 20,000 PSI

Stainless (6K)

Operating: 6,000 PSI
Proof: 9,000 PSI
Burst: 24,000 PSI

Temperature Ratings

Elements

Stainless -425°F to +1000°F

O-Rings

Buna -40°F to +250°F
Viton -20°F to +400°F
EPR -60°F to +400°F
Kalrez -40°F to +550°F
Teflon Encapsulated Viton -4°F to +400°F

22 Series How to Order

Example Part Number

A	B	C	D	E	F	G	H		
22	S	-	2	P	2	P	-	10S	V

Section A	Description	Code	
Filter Series	Mini In-Line Filters	22	
Section B			
Housing Material & Pressure	7075 Aluminum - 6000 PSI	A	
	304 SS - 6000 PSI	S	
	316 SS - 3000 PSI	T	
Section C			
Inlet Port Size	1/8"	2	
	1/4"	4	
	3/8"	6	
Section D			
Inlet Port Type	AS5202	A	
	Male SAE	M	
	Male NPT	N	
	Female NPT	P	
	Female SAE	S	
	MS33656	T	
Section E			
Outlet Port Size	1/8"	2	
	1/4"	4	
	3/8"	6	
Section F			
Outlet Port Type	AS5202	A	
	Male SAE	M	
	Male NPT	N	
	Female NPT	P	
	Female SAE	S	
	MS33656	T	
Section G			
Micron Rating / Material	Material	Micron/Nom	Micron/Abs
	316 SSTL	2	10
	316 SSTL	5	18
	316 SSTL	10	25
	316 SSTL	20	40
	316 SSTL	40	75
	316 SSTL	100	150
Section H			
O-Ring Material	Buna	N	
	Viton®	V	
	EPR	E	
	Teflon	T	
	Kalrez®	K	
	Teflon Encapsulated Viton	S	

Replacement Element

A	B	C	D	E	F	G	H
22	E	-				10S	

Section A	Description	Code
Element	Element Size	22
Section B		
	Element	E
Section G		
Micron / Material	See Section F Above for Code	10S